

# EYE LIDS

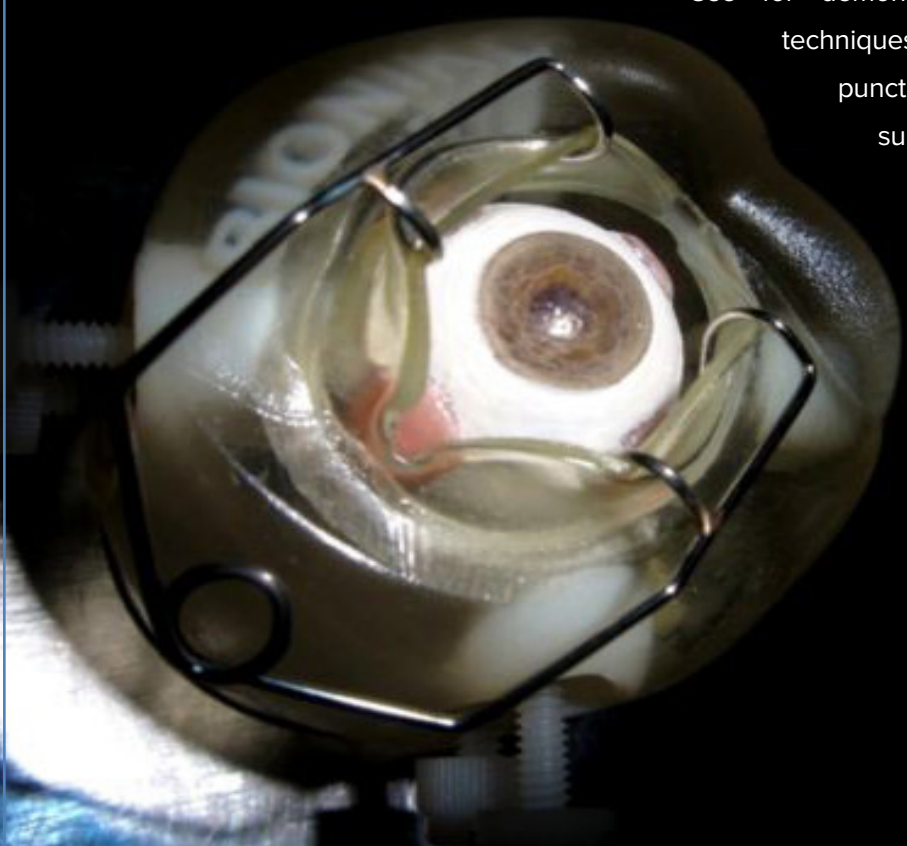
## FLEX-ORBIT Accessory



Add realism and difficulty to your simulation scenario by using the EYE LIDS FLEX-ORBIT accessory. The flexible EYE LIDS are detachable and easily inserted into the FLEX-ORBIT groove.

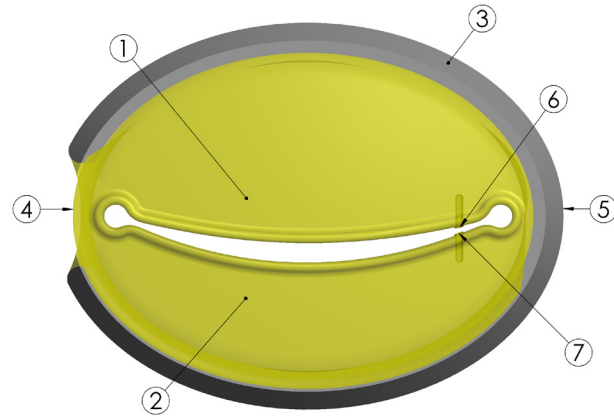
Use for demonstration, practice and assessment of techniques such as speculum placement and punctum plug placement. EYE LIDS features superior and inferior puncta (0.6mm).

EYE LIDS can also be used as an introductory ocular trauma model. Eye lid laceration is not an everyday encounter for many ophthalmologists and EYE LIDS provides a basic platform for training and communication with peers and students.



Pat. Pending

- 1 - SUPERIOR LID
- 2 - INFERIOR LID
- 3 - SNAP RING
- 4 - SNAP RING GAP (TEMPORAL)
- 5 - SNAP RING APEX (NASAL)
- 6 - SUPERIOR LACRIMAL PUNCTUM (0.6 MM)
- 7 - INFERIOR LACRIMAL PUNCTUM (0.6 MM)



## FEATURES AND BENEFITS

- Add further realism to your training scenario
- Demonstrate speculum insertion
- Demonstrate lacrimal punctum dilation and occlusion
- Simulate eye lid trauma and suturing techniques

