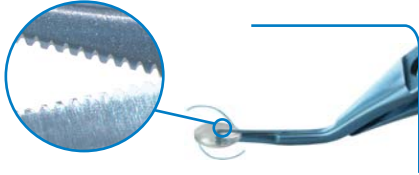




## IOL Removal Set

### 1-705 Osher Angled IOL Cutter



Micro serrations grip the IOL as the scissors cut. IOL is kept stable and does not slip in the blades of the scissors.

Suitable for Silicone and Acrylic IOL's

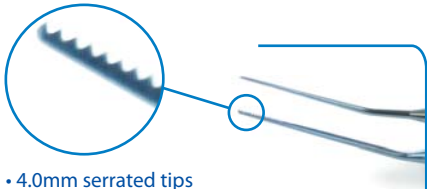


Standard handle, length 94.0mm

- Blunt tips with micro serrated blades
- Cut length 8.0mm
- Tip to pivot length 9.5mm

video available at  
[www.duckworth-and-kent.com/videos](http://www.duckworth-and-kent.com/videos)

### 2-796N DK IOL Removal Forceps



- 4.0mm serrated tips
- 30° angled shafts, tip to angle length 14.0mm



Standard handle, length 82.5mm

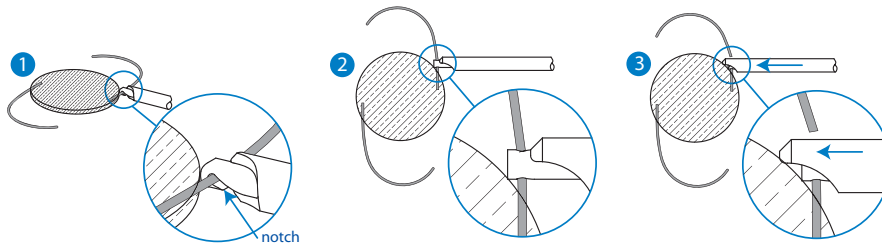
### 1-805 Osher Haptic Cutter



- 20 gauge, 20.0mm long shaft
- Squeeze action activates jaws to sever haptic



Round squeeze handle, length 145.0mm



Tips of the the Osher Haptic Cutter have a notch that fits over and grasps the haptic (fig1). When the handle of the Osher Haptic Cutter is squeezed (fig 2 - 3) the outside tube of the tip moves forwards and severs the haptic.

### 6-602 Barrett Rhexis Dissector



- Fine chisel shaped tip
- Rounded surfaces leading to tip
- Curved tip, angled at 45° from shaft
- Tip to bend length 12.0mm
- Round handle, length 119.5mm



Round handle, length 119.5mm

[www.duckworth-and-kent.com](http://www.duckworth-and-kent.com)

7 Marquis Business Centre  
Royston Road, Baldock  
Herts SG7 6XL England

Tel: +44 (0)1462 893254  
Fax: +44 (0)1462 896288  
Email: [info@duckworth-and-kent.co.uk](mailto:info@duckworth-and-kent.co.uk)



© March 2009 Duckworth & Kent  
Revised 08.08.2013

D&K® is a registered trademark. All other brand names are trademarks or registered trademarks of their respective owners. All schematic line drawings, photographs and copy in this leaflet are fully protected by copyright. No part of this leaflet may be reproduced in any form without prior written permission. We reserve the right to make changes at any time, without notice, in product specifications and availability. Descriptive, typographic, or photographic errors are subject to correction. Name(s) of instruments are often comprised of surgeon's name, combination of surgeons' names or by the category of the instrument.

*at the Leading Edge*