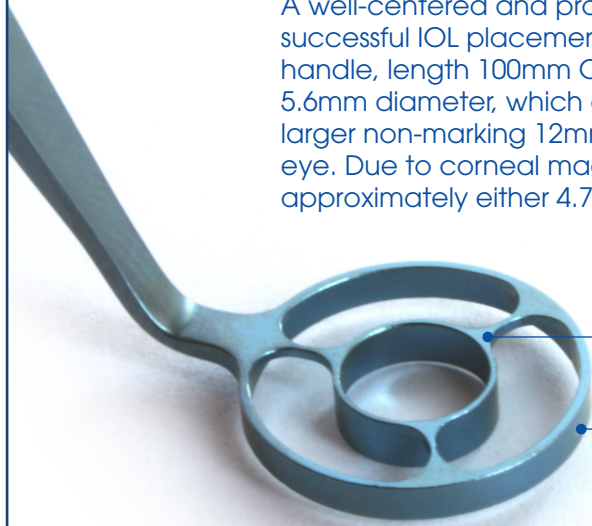




## Assisting Continuous Capsulorhexis (CCC)

A well-centered and properly sized anterior capsulotomy plays an important role in achieving successful IOL placement, especially with the new refractive based lenses. The Fujimoto Round handle, length 100mm CCC Guide marks the cornea with a circular guide of either 5.3 or 5.6mm diameter, which are suitable for 5.5mm diameter optics or 6.0mm diameter optics. A larger non-marking 12mm outer ring provides centralisation of the Fujimoto CCC Guide on the eye. Due to corneal magnification which varies between patients, the resulting capsulotomy is approximately either 4.7mm or 5mm in diameter.

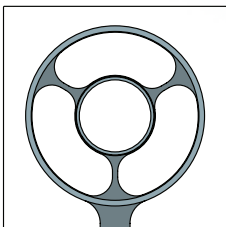


Internal ring marks cornea as a guide for CCC.

Available in 5.3mm or 5.6mm ring sizes

12mm outer ring provides guide to centralise marker onto the cornea.

### 9-518-2 Fujimoto CCC Guide - Ø5.6mm

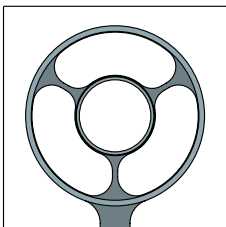


- 12mm diameter outer ring
- Inner capsulorhexis guide 5.6mm diameter ring

- Smooth surface to mark cornea
- Fixed flat handle, length 100mm

Product No.	Product Name	Variation
9-518-1	Fujimoto CCC Guide - Ø5.3mm	Ø5.3mm

### 9-518-2R Round Handle Fujimoto CCC Guide - Ø5.6mm



- 12mm diameter outer ring
- Inner capsulorhexis guide 5.6mm diameter ring

- Smooth surface to mark cornea
- Fixed round handle, length 100mm

Product No.	Product Name	Variation
9-518-1R	Round Handle Fujimoto CCC Guide - Ø5.3mm	Ø5.3mm

The Ota-Fujimoto CCC Marker marks the cornea with a circular guide of 5.6mm diameter, which is suitable for 6mm diameter optics. Due to corneal magnification which varies between patients, the resulting capsulotomy is approximately 5mm in diameter.

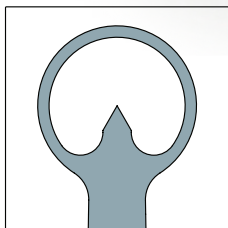


5.6mm diameter ring

Centre pointer

9-518-3

Ota-Fujimoto 5.6mm CCC Marker with Centre Pointer

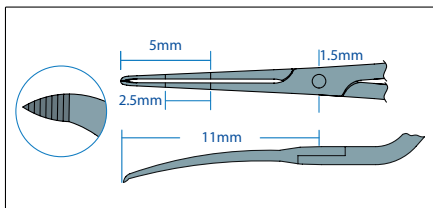


- 5.6mm diameter ring, low profile with centre pointer
- Round handle, length 94mm



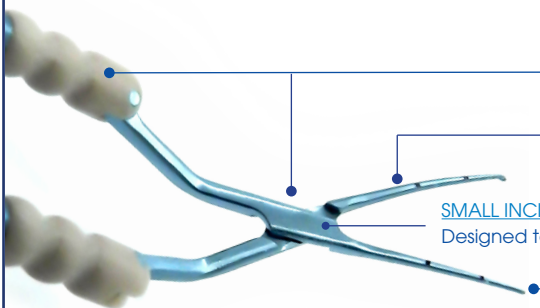
2-2-716G-8

Calladine-Inamura Flat Handle Capsulorhexis Forceps



- Pointed serrated interlocking tips
- Curved shaft, tip to pivot point 11mm
- Cross action tips, 1.5mm width at pivot box
- Marks on shaft at 2.5mm and 5mm denote desired size of capsulorhexis
- Tips angled 45° to handle
- Flat handle, overall length 120mm

Product No.	Handle Type	Tip to Pivot Point
2-2-716G-8R	Round Handle	11mm
2-2-716G-9	Flat Handle	10mm
2-2-716G-9R	Round Handle	10mm



**SMOOTH ACTION**

Three pivot point precision provides a smooth controlled action.

**CORNEAL INCISION  
or SCLERAL TUNNEL**

Tip to pivot length either 10mm or 11mm. Designed specifically for cornea or scleral placed incisions

**SMALL INCISION SIZE**

Designed to fit through any incision down to 1.8mm.

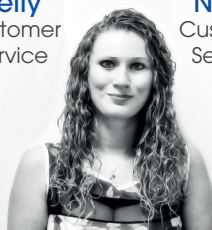
**POINTED SERRATED TIPS**

Interlocking serrated tips with a sharp point used to initiate the capsule tear then securely grasp the capsule.

**Maria**  
Customer  
Service  
Supervisor



**Kelly**  
Customer  
Service



**Nicky**  
Customer  
Service



If you are interested in any of our product range or have a general enquiry please contact anyone of our dedicated customer service team members who are ready to help.

mariagente@  
kellyobrien@  
nickyguthrie@ } duckworth-and-kent.co.uk

© July 2012 Duckworth & Kent  
Revised 19.11.18

Email: info@duckworth-and-kent.co.uk  
Tel: +44 (0)1462 893254  
Fax: +44 (0)1462 896288

Find us on



www.duckworth-and-kent.com