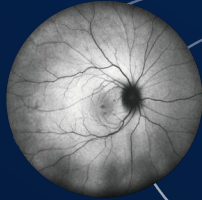
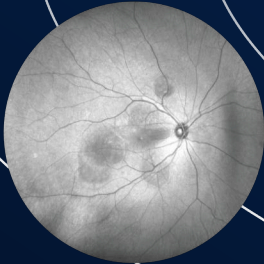


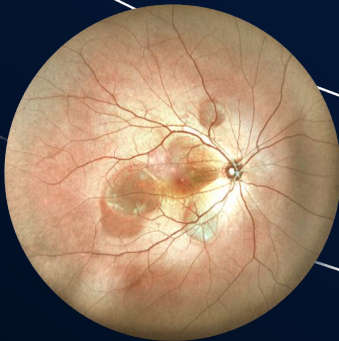
blood vessels and cones



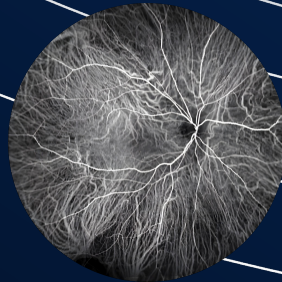
G-AF



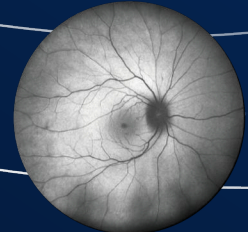
IR



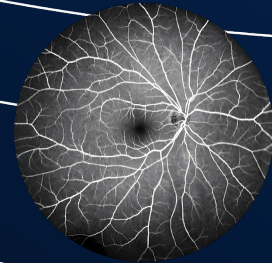
MColor



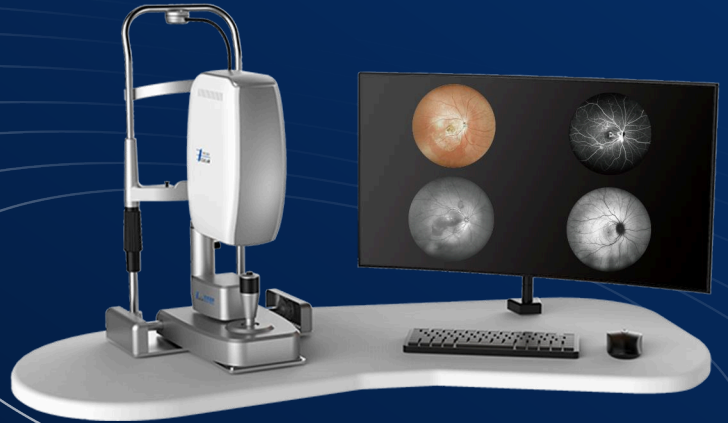
ICGA



B-AF



FFA



Apollo RGB

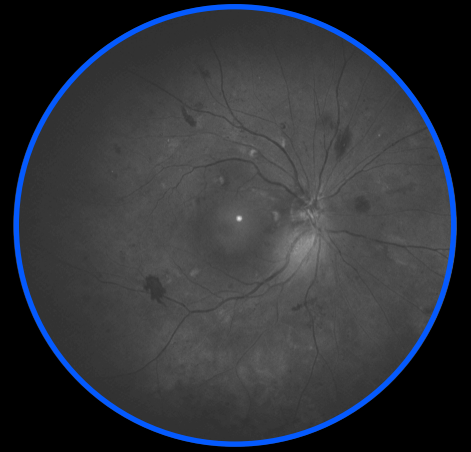
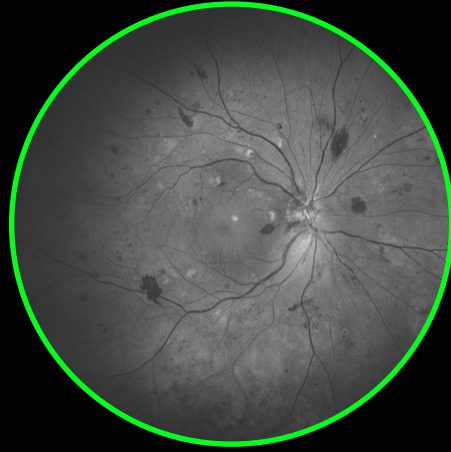
Ultra-wide field

Mcolor & AF
FFA & ICGA

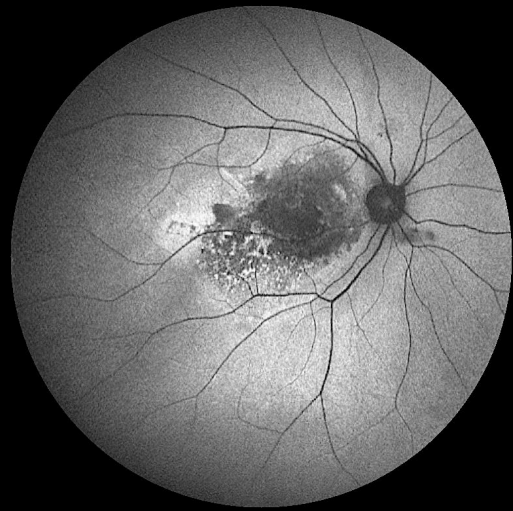
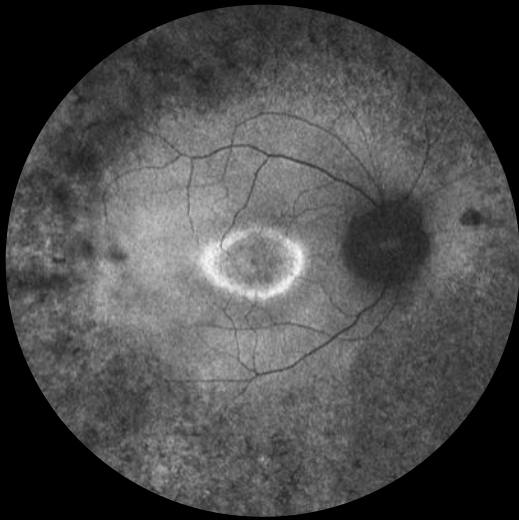
2.0mm Pupil Size

Offline Retina
Assistant

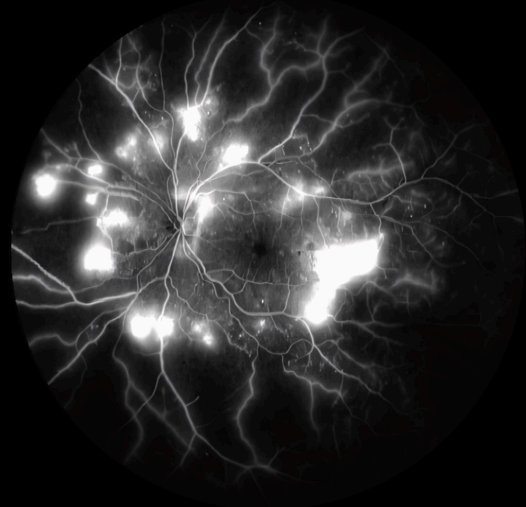
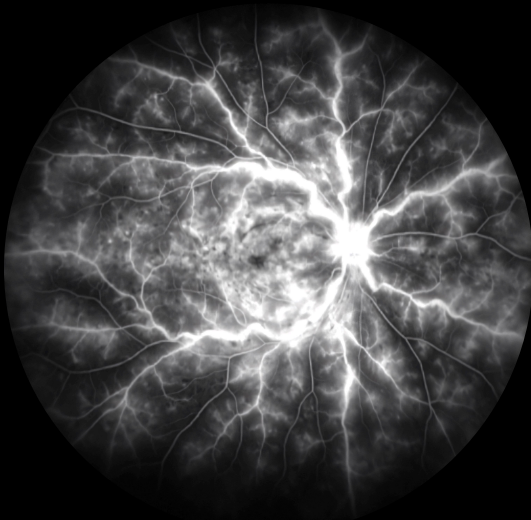
RGB Laser Imaging



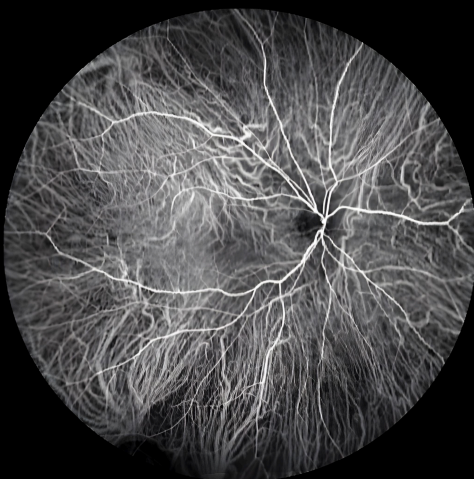
Apollo RGB ultra widefield image is the combination of 3 confocal laser sources that provide **maximum fidelity** and **maximum contrast**



Fundus autofluorescence (AF) imaging is a rapid and noninvasive technique to evaluate retinal pigment epithelial (RPE) function, which includes Blue AF and Green AF.



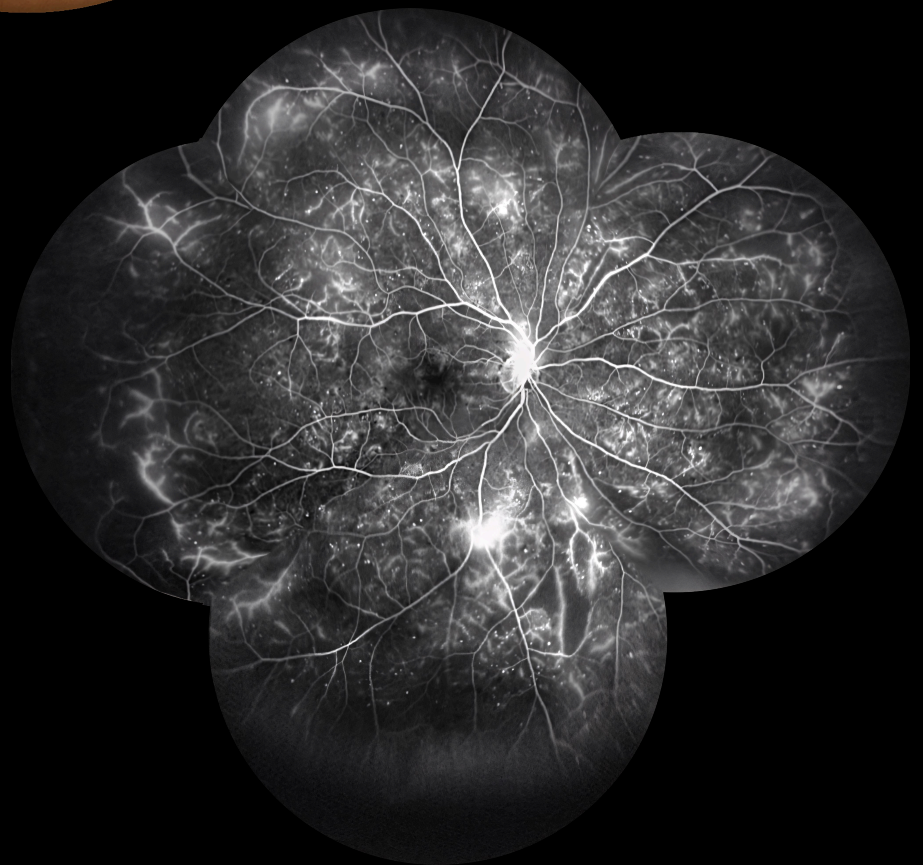
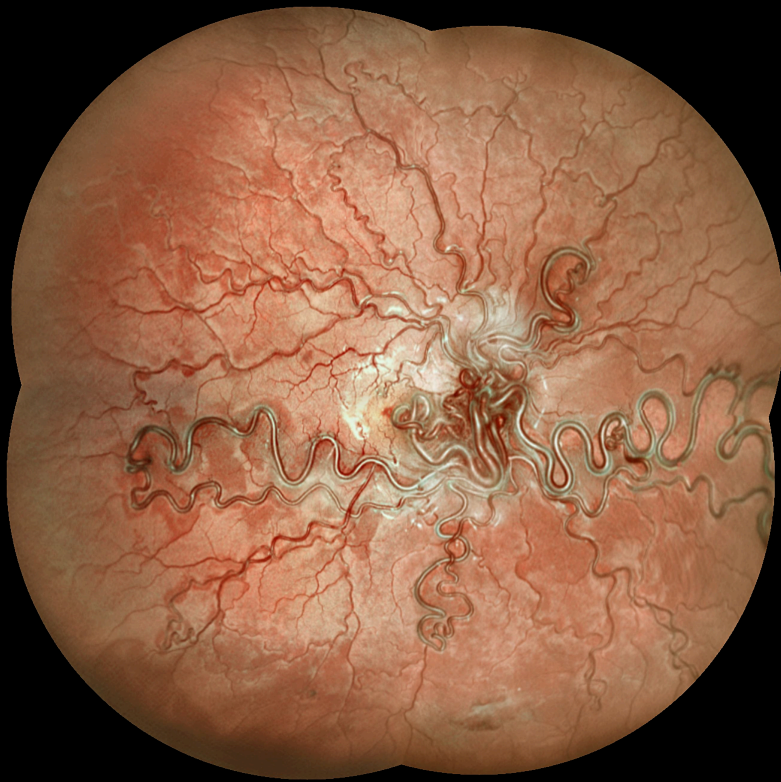
Fundus fluorescein angiography is a technique of imaging the retinal vasculature by using sodium fluorescein dye.



Indocyanine green angiography utilizes a higher wavelength that penetrates the retinal pigment epithelium and helps in imaging the choroidal vasculature

Up to 240° view

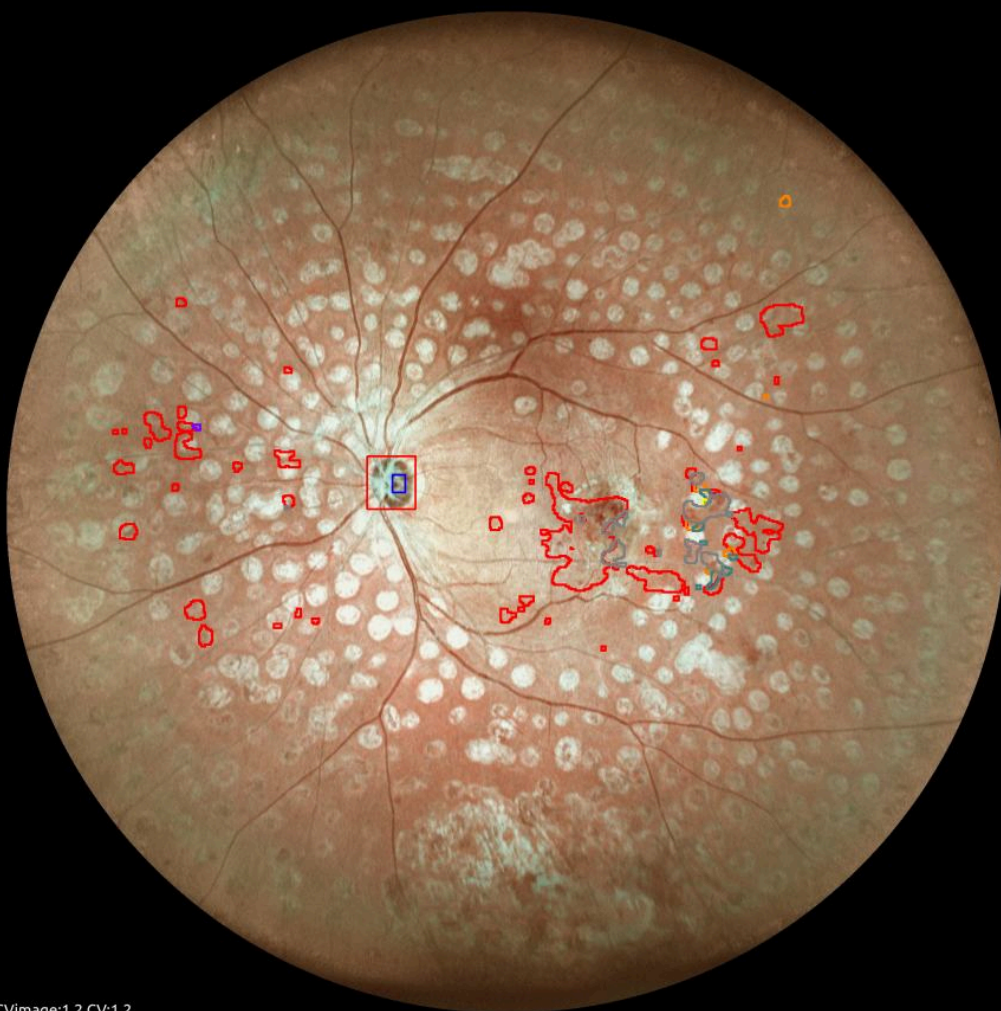
Capture two to nine photos and combine in a panorama view easily thanks to the fast and precise joystick control



Obtain UWF images with easy & fast capture of 135° retinal photos in all modalities: Mcolor, AF, FFA, ICGA and create panorama views up to 240°.

RETINA ASSISTANT

Apollo comes with a full featured review software, including the offline Retina Assistant, tools for comparison, measurements, annotations and export.



CVimage:1.2 CV:1.2
Diop:-1.7D

Select
Delete
Modify
Contrast to view
Display Result

Image Quality:99
C/D ratio: V0.33 H0.26

proliferative diabetic retinopathy (99.90%)
central retinal vein occlusion (0.20%)
vitreous opacity (0.17%)
nonproliferative diabetic retinopathy (0.17%)
vitreous hemorrhages (0.10%)
no abnormal (0.10%)

▼

<input checked="" type="checkbox"/>		Bleeding (52,11.45mm ²)
<input checked="" type="checkbox"/>		Microangioma (6,0.32mm ²)
<input checked="" type="checkbox"/>		Hard Exudates (7,0.31mm ²)
<input checked="" type="checkbox"/>		Soft Exudates (1,0.01mm ²)
<input checked="" type="checkbox"/>		NV or Fibrovascular Membrane (12,1.84mm ²)
<input checked="" type="checkbox"/>		Retinal Vascular Abnormalities (1,0.02mm ²)

- Unlimited use: no license required
- Offline operation: works without internet
- 20 different eye pathologies detection

Lossless optical zoom

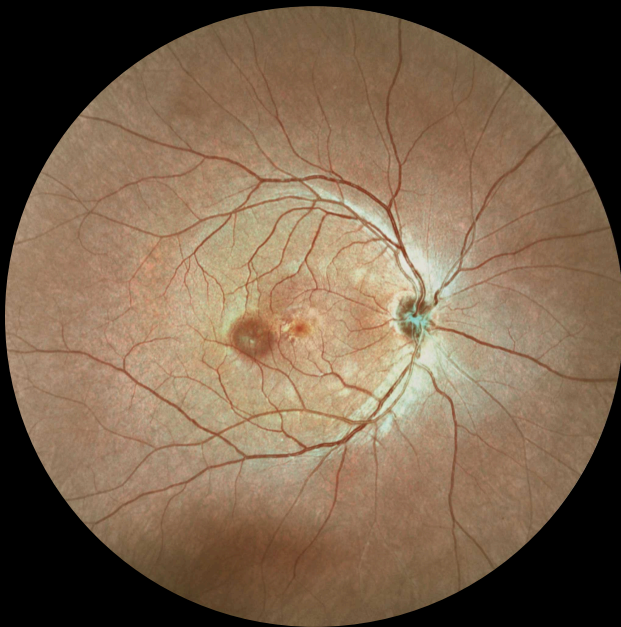
One click switch Field of View to zoom into areas of interest



45° UHD








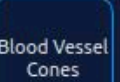


90° HD






135° WA

Acquisition mode

 MColor	 IR	 RF	 AF
 ICGA	 FFA	 ICGA + FFA	 Blood Vessel Cones

FOV

 WA	 HD	 UHD
--	---	--

Full power to focus on the big view or search for the details

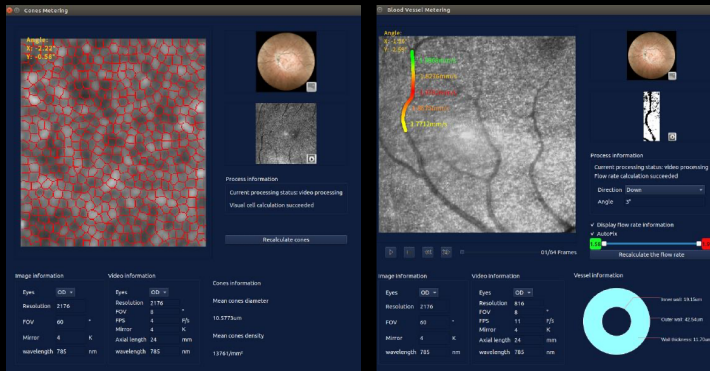
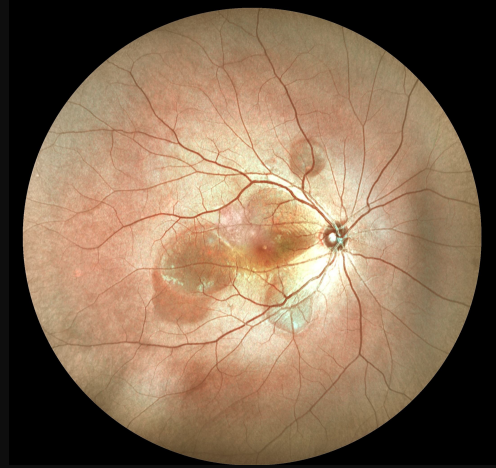
Apollo RGB advanced optical zoom feature offers three levels of magnification, from ultra-wide field (UWF) for comprehensive retina views to ultra-high definition (UHD) for precise detail visualization, empowering operators to capture every aspect of retinal health with unparalleled precision and clarity.

With this versatile zoom capability, users can ensure no detail goes unnoticed, facilitating comprehensive diagnosis and monitoring of ocular conditions.

PUPIL($\geq 2\text{mm}$)

Optimal photos even on really small pupils resulting on higher success rate of gradable images

Strong Confocality is derived from the Scanning Laser Technology and allows to penetrate easily through cataract and eye opacities and to take images even on pupil size of 2mm and under unfavorable light conditions.

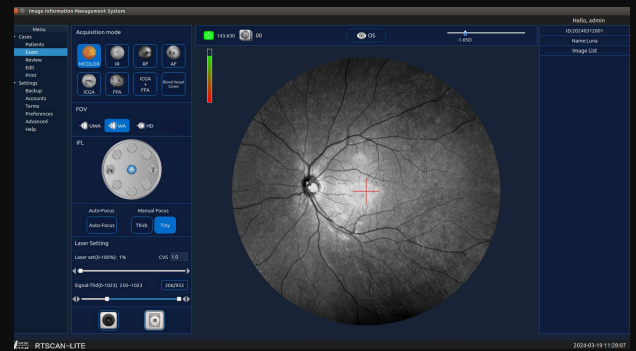


CELL AND BLOOD FLOW TOOL

- Cone cell density
- The average diameter of Cone cell
- Red blood cell flow velocity
- Vascular wall thickness and diameter

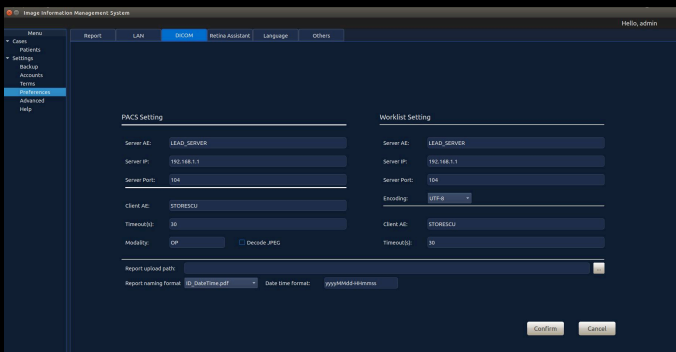
LIVE IR PREVIEW

The operator interface displays a live infrared (IR) image, enabling users to capture optimal photos effortlessly with a comprehensive control interface that is both user-friendly and fully-featured, ensuring seamless operation for superior image quality.



DICOM CONNECTIVITY INCLUDED

Seamless integration with DICOM protocol, featuring built-in support for worklists, ensuring effortless integration into existing medical imaging systems.



	CRO	CRO PLUS
Imaging Modalities	Multicolor (Red, Green, Blue) Infrared (IR), RedFree (RF) Fundus autofluorescence FAF (B-AF, G-AF) fundus fluorescein angiography (FFA)	Multicolor (Red, Green, Blue) Infrared (IR), RedFree (RF) Fundus autofluorescence FAF (B-AF, G-AF) fundus fluorescein angiography (FFA) Indocyanine green angiography (ICGA)
Field of View (eye center)	One shot single capture Optical zoom 135° WA / 90° HD / 45° UHD	
Automatic Montage	Up to 240° mosaic 2 to 9 images	
Non Mydriatic	Minimum pupil 2mm	
Resolution	5 microns	
Fixation Targets	Internal 1 central and 8 peripheral fixation targets External flexible target	
Diopter Compensation	-35D / +50D	
Software Included	Patient management Retina review and annotation Multiple review stations DICOM compatible	
Retina Assistant	19 pathologies detection Offline, no internet required Unlimited license use	
Cells and blood flow tools	8° high magnification image Cone density count Blood velocity measurement	
Hardware Included	PC computer Monitor Table (printer)	
Power	Voltage: 100-240V~50-60Hz	

Microclear is committed to the highest standard of retina imaging

Suzhou MicroClear Medical Instruments Co., Ltd

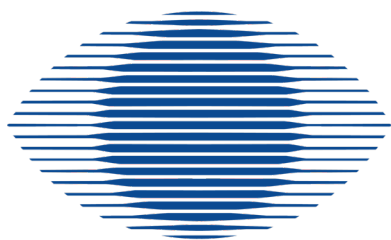
Tel : +86-512-67067163

Fax : +86-512-67066173

E-mail : marketing@microcleartech.com

Suite 1601-1602, G2 Building, No.88 Jinjihu Avenue, Suzhou Industrial Park, Suzhou, Jiangsu P.R.China

DISTRIBUTORE ITALIANO



SIRoftalmica

SIR Oftalmica Srl

Via Napoleona 7

22100 - COMO

Tel. : 031-570869

info@siroftalmica.com

www.siroftalmica.com

P.IVA : 01814920136

Cell. A. Molteni: 328.1808176