

smart retinal imaging



easyscan

EasyScan:

Superior Imaging

Never Dilate

Mobility

Connectivity

Smart Retinal Imaging



Enjoy the benefits of SLO technology and capture high-quality images easily for accurate diagnosis.



Reduce examination time, capture images through small pupils and increase patient satisfaction with the fact that no dilation is ever needed.



EasyScan is a compact, light-weight device that will fit every office space and enable it to be easily transported between locations.



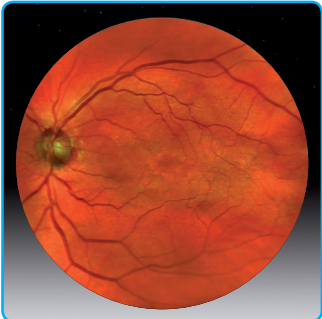
EasyScan can be used in single practices, mobile workstations and with multiple review stations.

Superior

Imaging



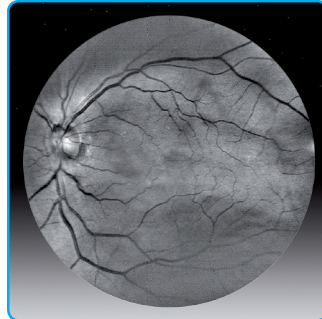
No pathology



EasyScan, OS, merged central



EasyScan, OS, infrared central



EasyScan, OS, green central

AMD



EasyScan, early AMD, color

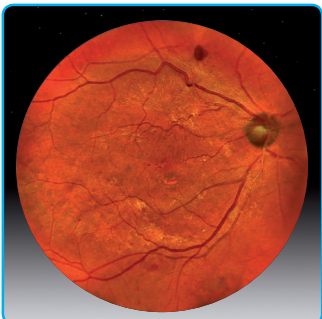


EasyScan, early AMD, infrared

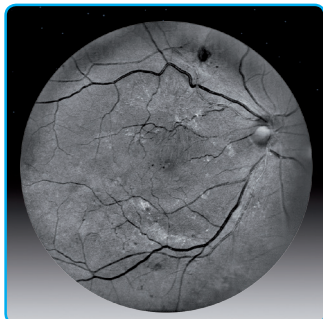


Conventional fundus, early AMD, color

Diabetic retinopathy



EasyScan, DR, color



EasyScan, DR, green



Conventional fundus, DR, color

EasyScan employs Scanning Laser Ophthalmoscope (SLO) technology for superior imaging

Retinopathies become more easily detectable with a clear and sharper image for accurate diagnosis.

Benefits of SLO technology include:

- Earlier diagnosis of retinal conditions
- Greater contrast than a fundus camera
- Better penetration of media opacities such as cataract



Never Dilate

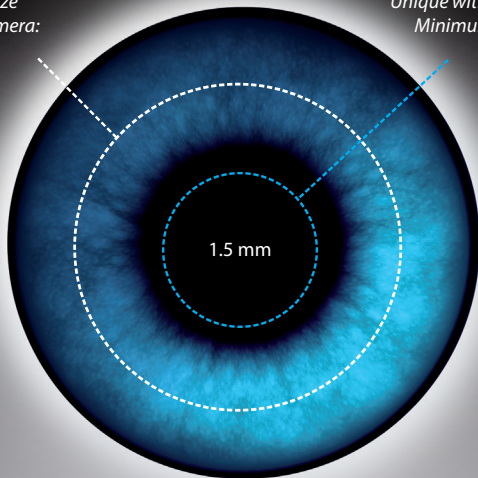


Undilated EasyScan image through cataract



Dilated fundus camera image through same cataract

Minimum pupil size
with a fundus camera:
3.3 mm

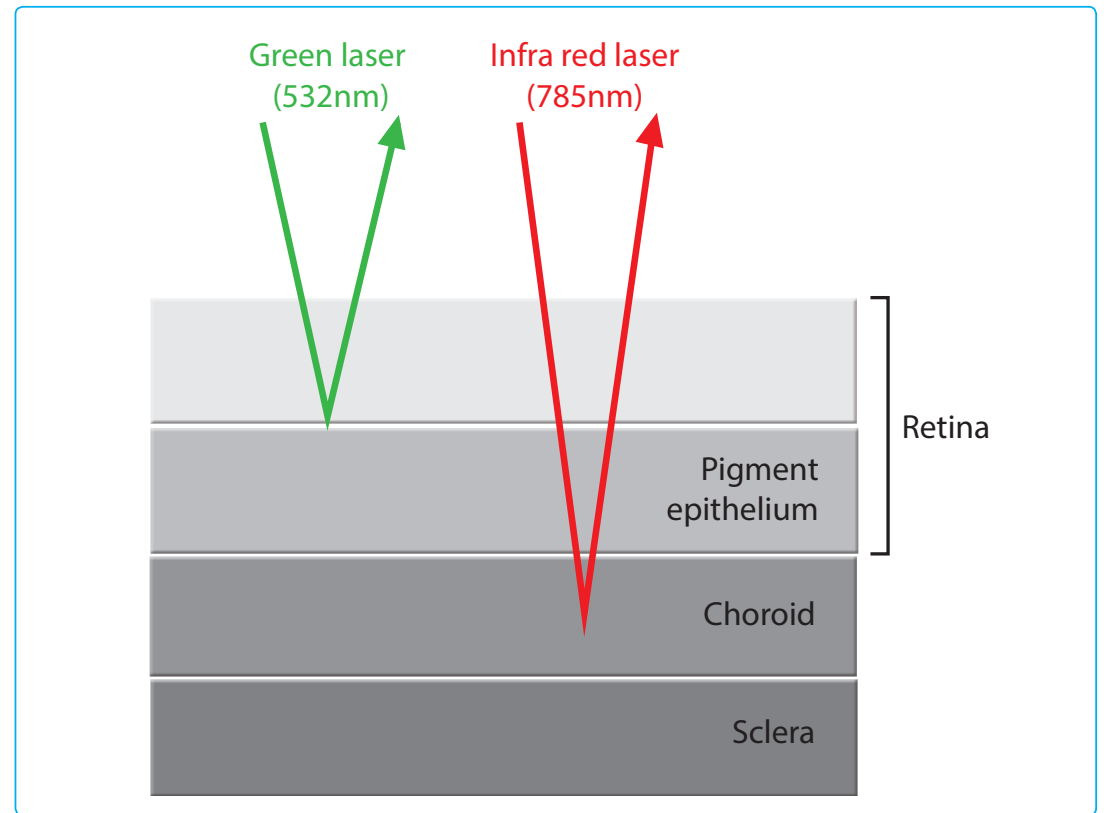


Unique with EasyScan:
Minimum pupil size
1.5 mm

EasyScan can always image through small pupils; there is no need to dilate.

Dilate

There is never any need for dilation when capturing images with EasyScan. This saves time and increases patient satisfaction. EasyScan also has the ability to scan through mild to moderate cataract.



EasyScan's green laser reveals any problems in the upper layers of the retina; its infrared laser enables you to spot issues in the pigment epithelium and choroid.

Mobility

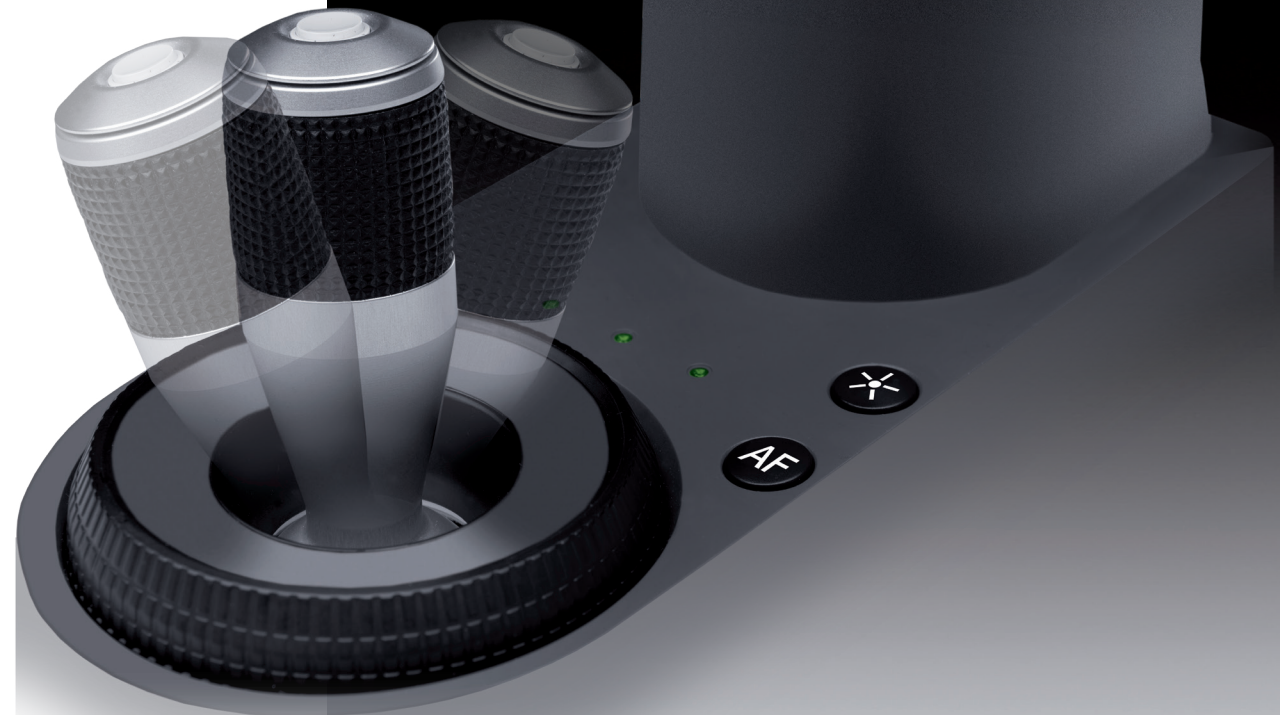


EasyScan's compact design allows it to fit in every office space and to be stored and moved between locations with ease. The simple USB connection to a computer gives you the flexibility to run your clinics anywhere. With a weight of less than 11kg/24lb and easy plug 'n play installation it opens up high-end eye care to patients all over the world in the blink of an eye.



User-friendly and convenient technology

EasyScan is user-friendly; anyone can capture high-quality images. It can be operated almost anywhere without having to darken a room. Internal fixation lights and the self-guiding software do the trick for you.





Connectivity

EasyScan can be used in single practices, mobile workstations and with multiple review stations. Images can be reviewed straight away if necessary. Network integration is easy and connection, updates and service can all be performed remotely.



Use for single practice



Multiple review stations

Mobile workstation

Plug & Play



Large network, scalable, remote updating



EasyScan



A breakthrough, zero-dilation retinal imaging system that uses SLO technology to diagnose retinal diseases including diabetic retinopathy, age-related macular degeneration (AMD) and glaucoma.



A full service program for opticians to differentiate from their competition. The program drives increased traffic, enhanced customer loyalty, increased consumer spending, improved business results and positioning as an eye expertise center.

Uses

Accurate diagnosis for Eye Care Professionals

"EasyScan gives us a great view of the internal retina which allows for early detection of maculopathies not typically seen by a dilated fundus exam".

Dr. Steven Squillace, O.D., Johnson Memorial Medical Center,
Stafford Spring, Connecticut, USA

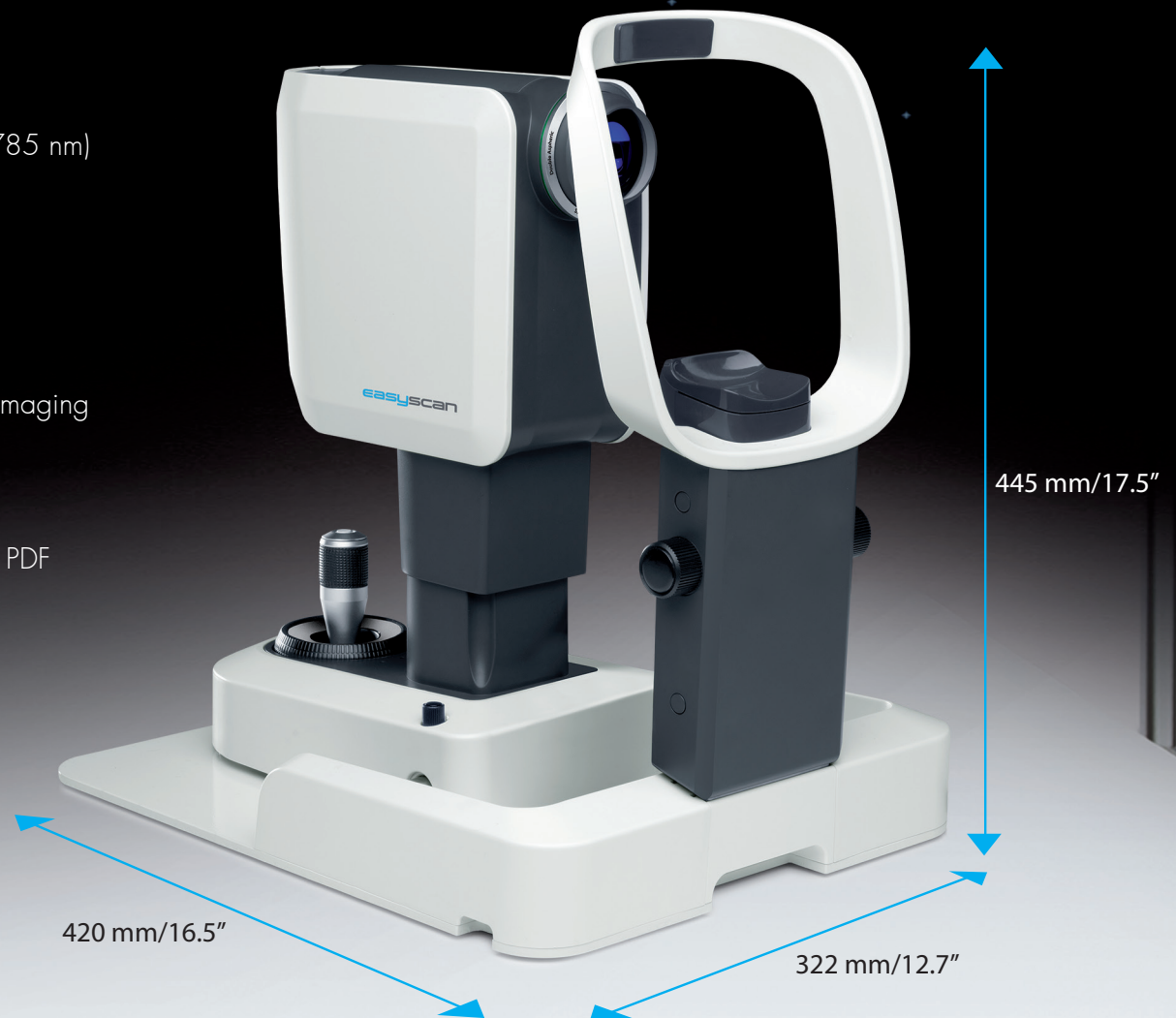
Boost your revenue simply by providing a three minute eye health service for your patients

"We experienced a turnover growth of 12% and a 70% higher average price paid for glasses."

Dr. Engelke, Optik Engelke GmbH, Neukirchen-Vluyn, Germany

Specifications

- Optical engine: Confocal SLO
- Capture mode: green (532 nm), near infrared (785 nm) and combined (pseudo color)
- Field angle: 45°
- Minimum pupil size: 1.5 mm
- Autofocus and auto capture: Yes
- Alignment help: "See what you get" with IR live imaging
- Emmetropia compensation: +/- 10D
- Networking capabilities including telediagnosis
- Image formats: TIFF, JPEG, BMP, PNG, DICOM, PDF
- Compact and portable
- Weight < 11kg/24lb



For more information:

International: EasyScan B.V. - +31 70 3993 112

USA: EasyScan Inc. - +1 888 660 6965

info@easyscantest.com - www.easyscantest.com

© 2015, EasyScan B.V.

DISTRIBUTORE ESCLUSIVO PER L'ITALIA

SIR Oftalmica Srl

Via Torriani 19/C

22100 - COMO

Tel. : 031-570869

info@siroftalmica.com

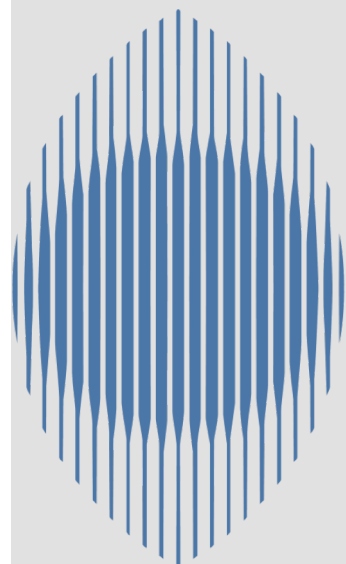
www.siroftalmica.com

P.IVA : 01814920136

Contatti specialists:

A. Molteni: 328.1808176

L. Ronchi: 335.6167324



SIR
oftalmica

FERRI CHIRURGICI – PRODOTTI MONOUSO
APPARECCHIATURE DI DIAGNOSTICA E TRATTAMENTO
LETTINI E SEDIE CHIRURGICHE - RIUNITI